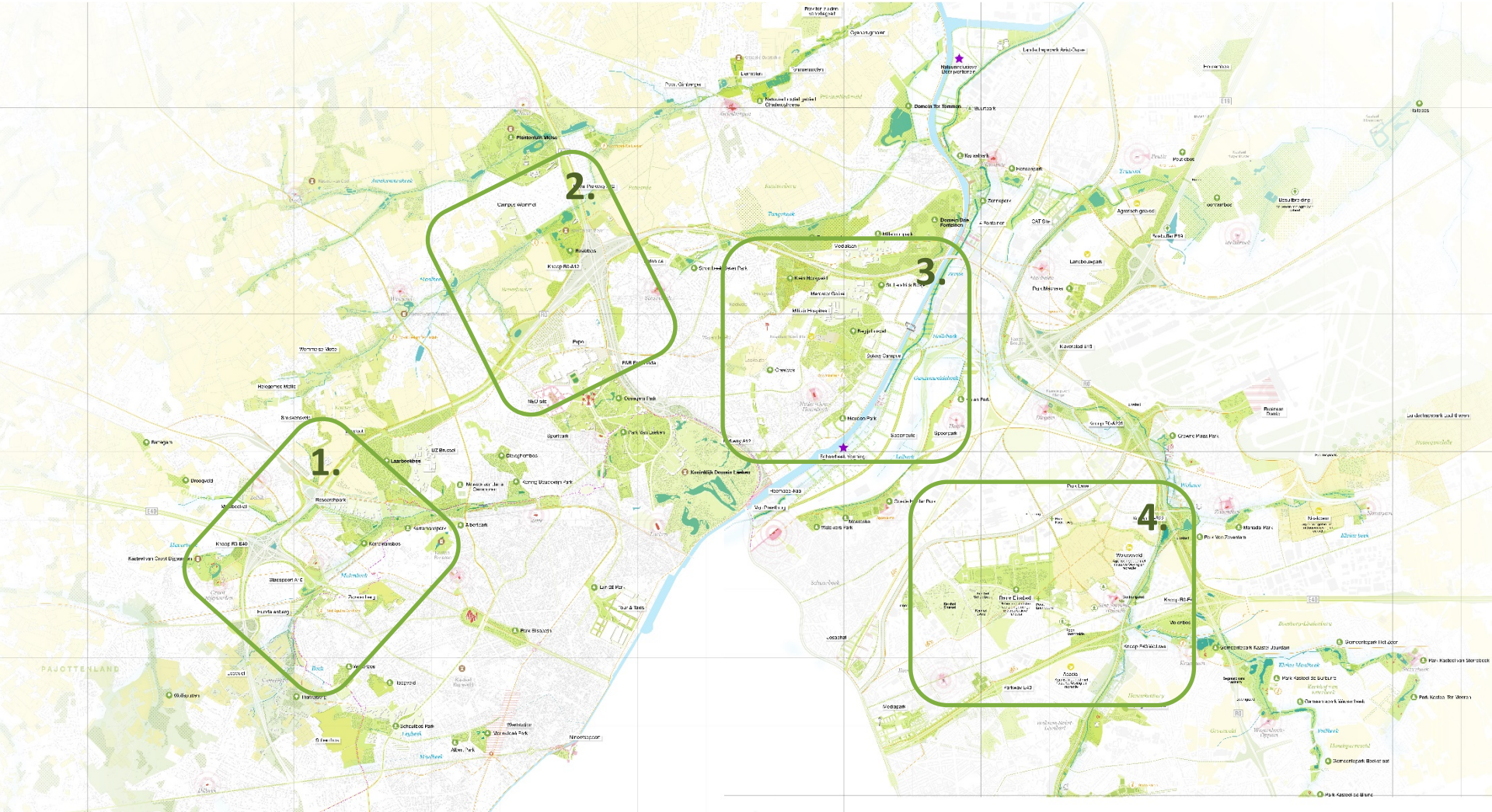
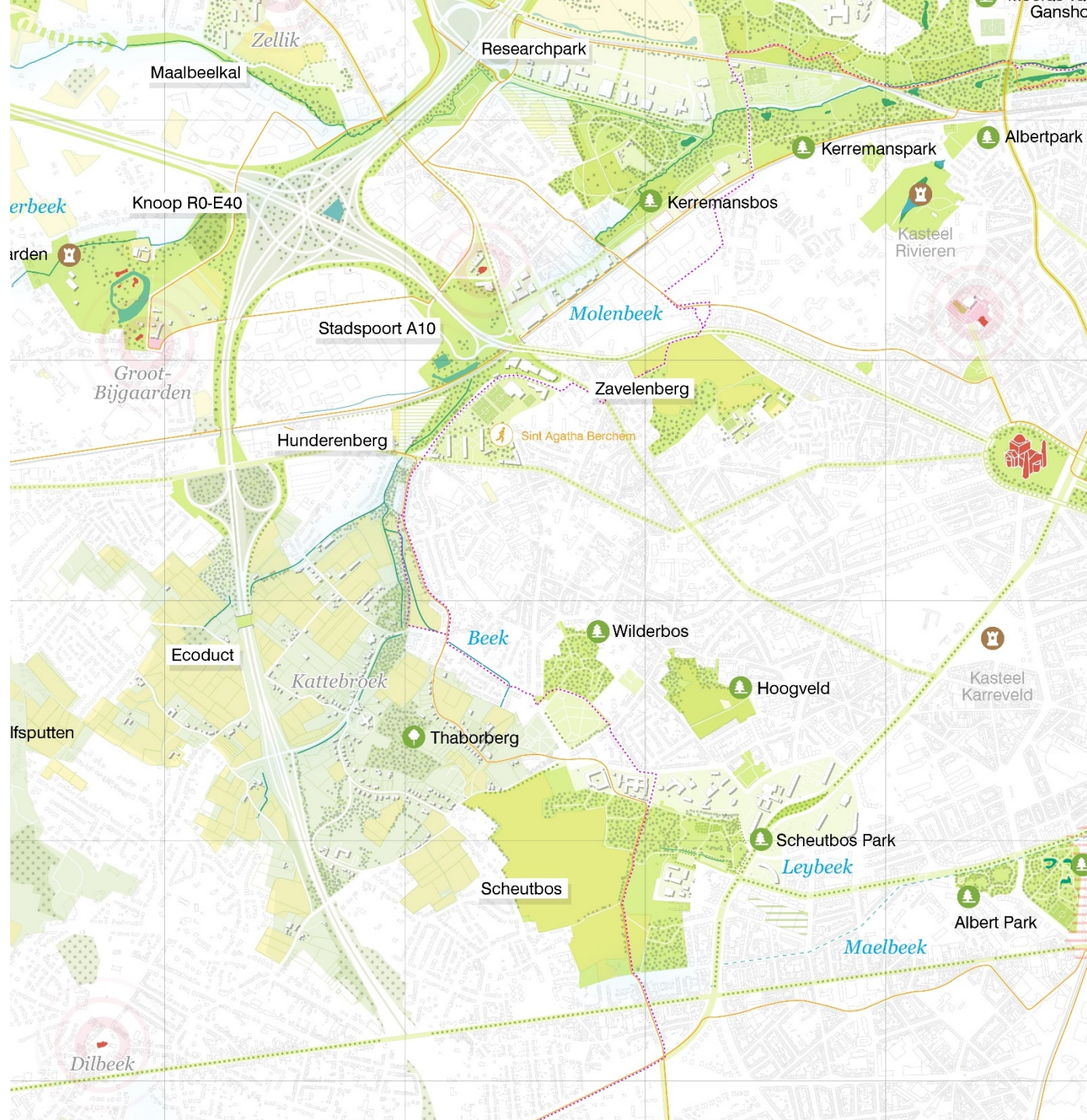
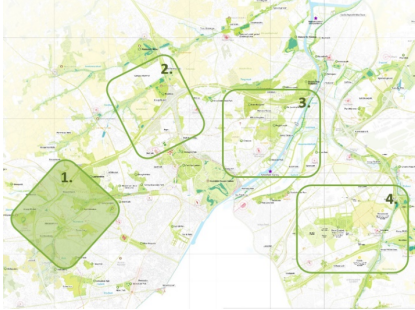


ZOOMS / 2 / ZOOMS

ZOOMS



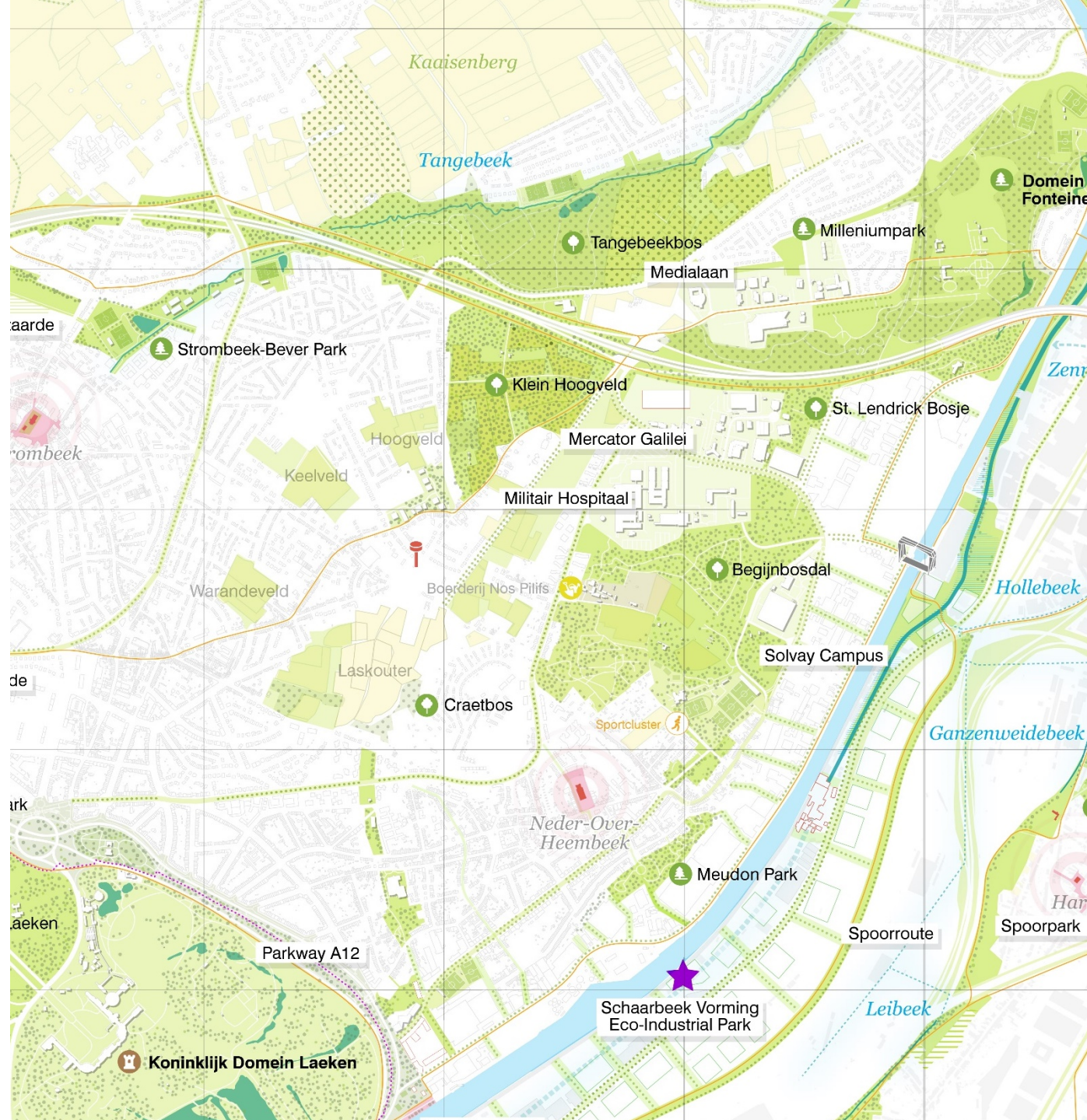
ZOOM 1. ZAVELENBERG



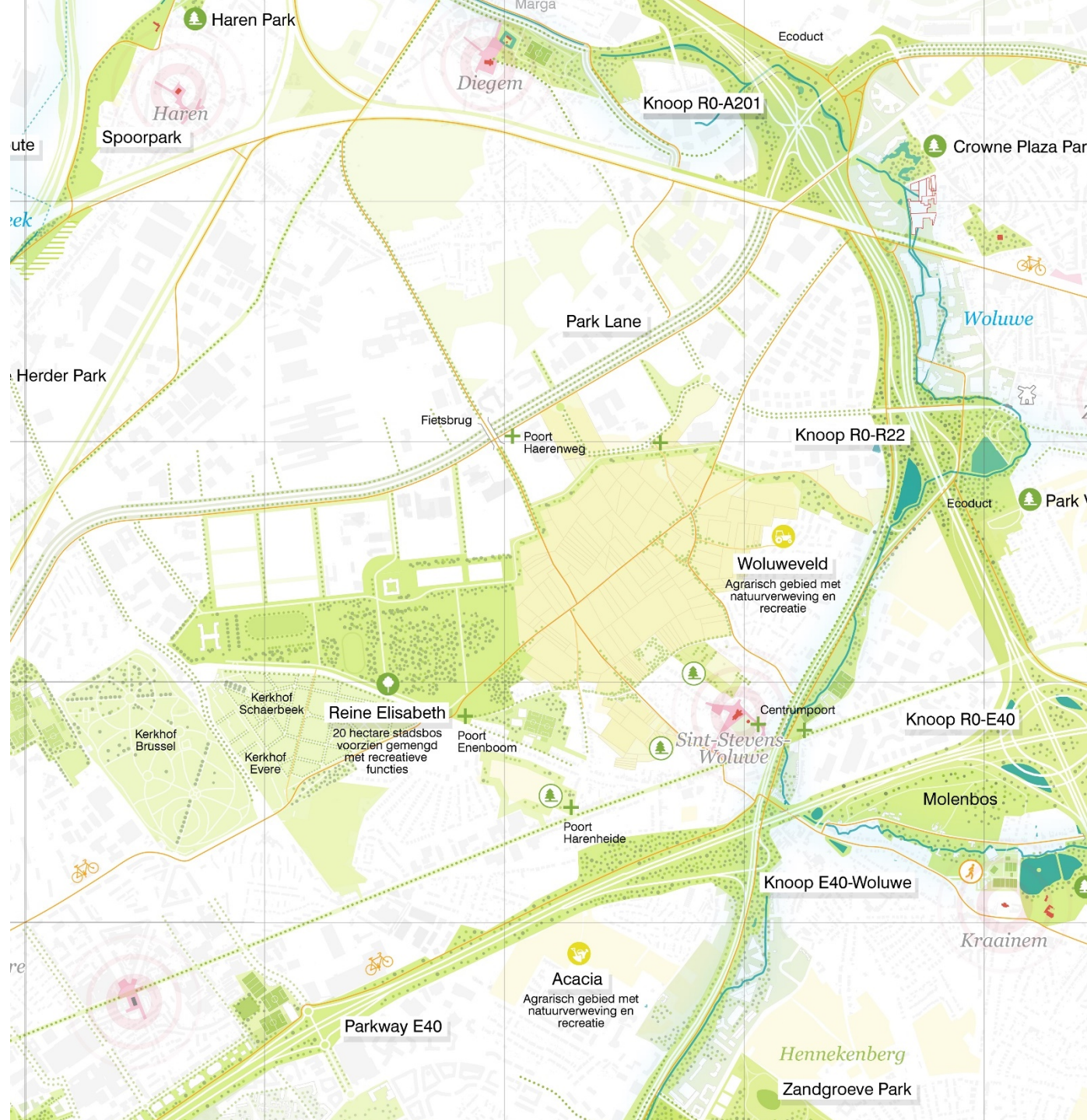
ZOOM 2. HEYSEL



ZOOM 3. BEGIJNENBOS



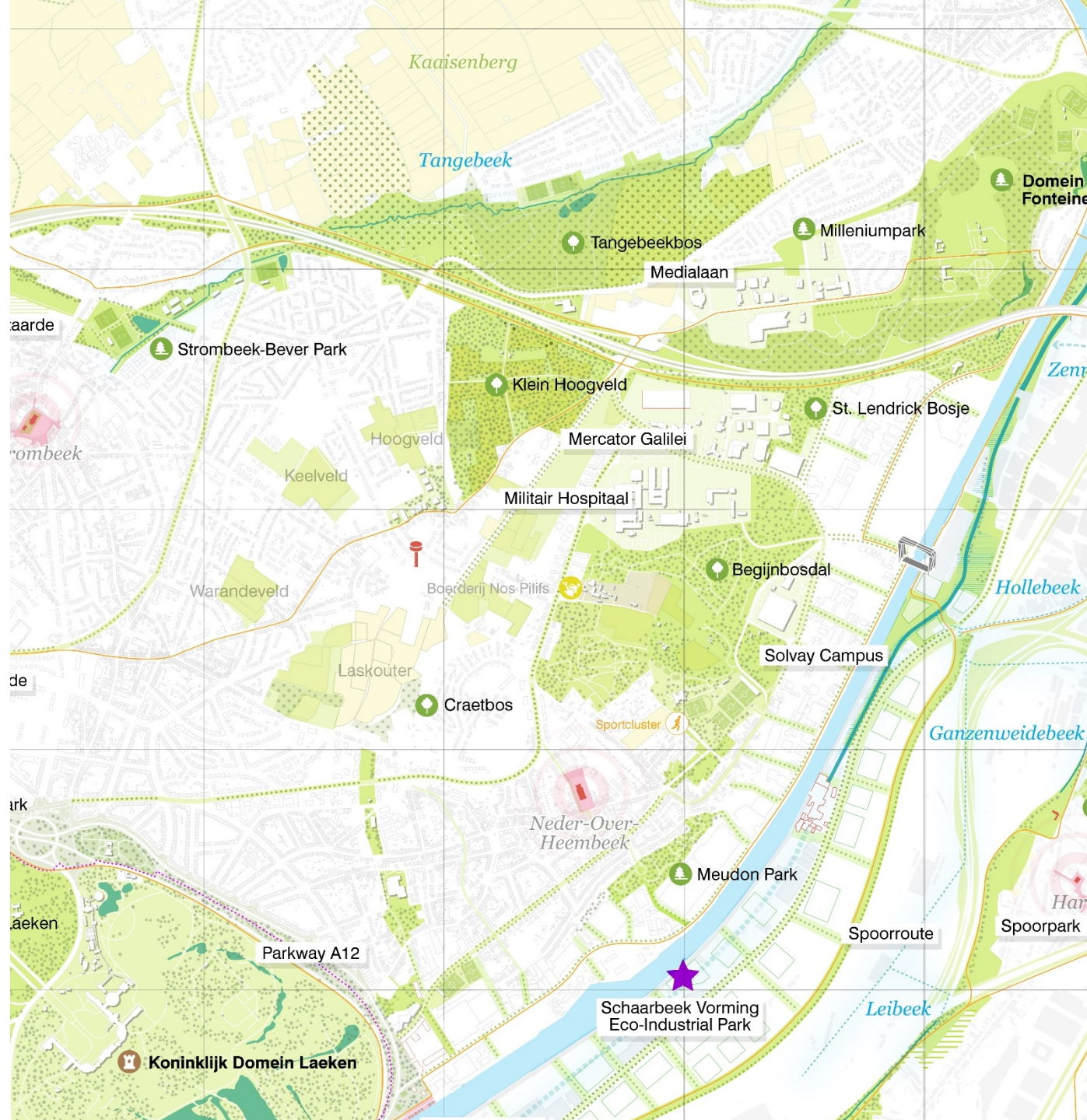
ZOOM 4. WOLUWEVELD



ZOOM 3. BEGIJNENBOS



ZOOM 3. BEGIJNENBOS

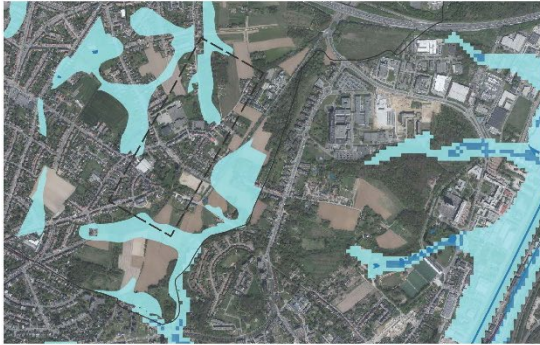


SITUATION EXISTANTE

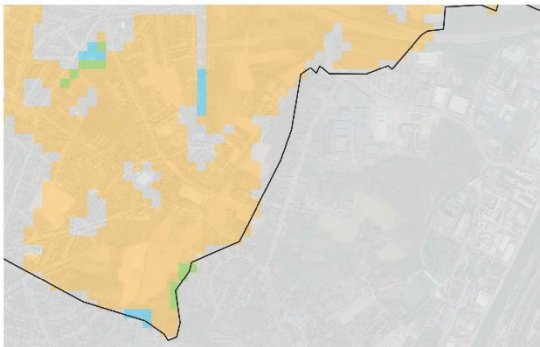
BESTAANDE SITUATIE



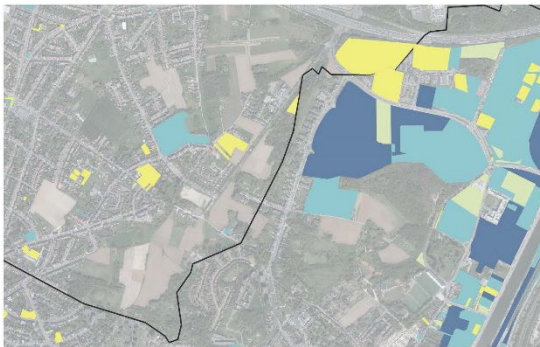
ANALYSE THÉMATIQUE



- Onvolgens
- Open water op
- Regelmatig water in
- Overmatig opvoelgebied
- Water
- Hoogop



- Scenario: Hoog impact 2100
Druisgevoeligheid bodem
- Toon legenda
- stedelijk gebied
 - w weinig gevoelig
 - matig gevoelig
 - gevoelig
 - zeer gevoelig



- Bodemverontreinigingen
- Risicogebieden te onderzoeken
 - Niet verontreinigd
 - Verontreinigd zonder verdere maatregelen
 - Verontreinigd met verdere maatregelen

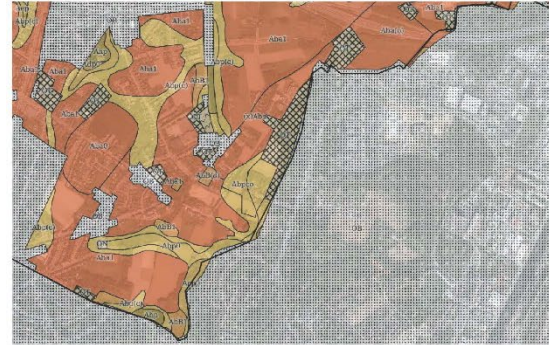
THEMATISCHE ANALYSE



- Aanwinstig verbinding
- te verbeteren verbinding
- Samenwerkende

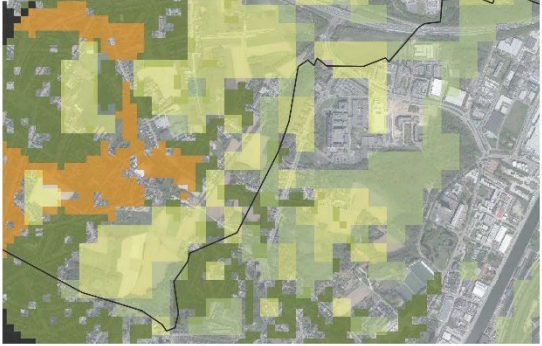
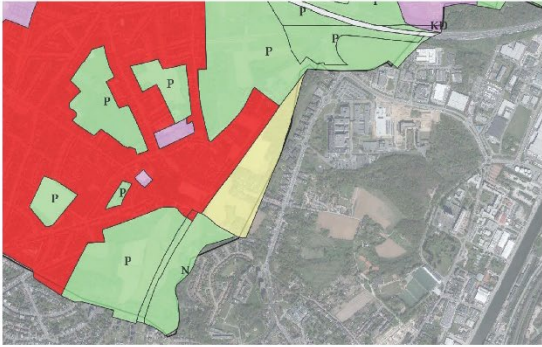
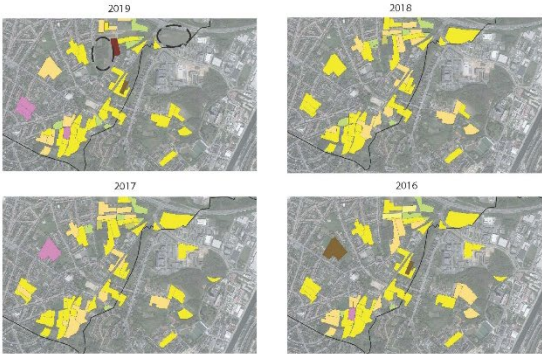


- groene connectie
- aanpassing gebied
- aanpassing kanalenovers
- versterken natuur
- stedelijk groenbeleid
- biodiversiteit H40/industrie

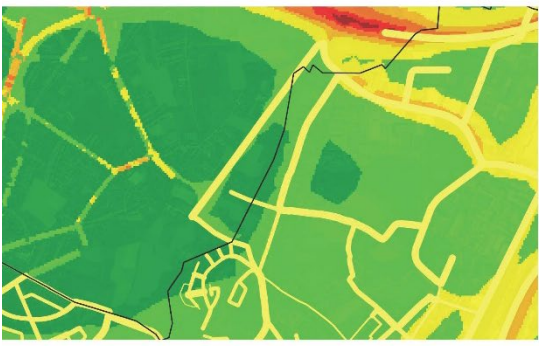
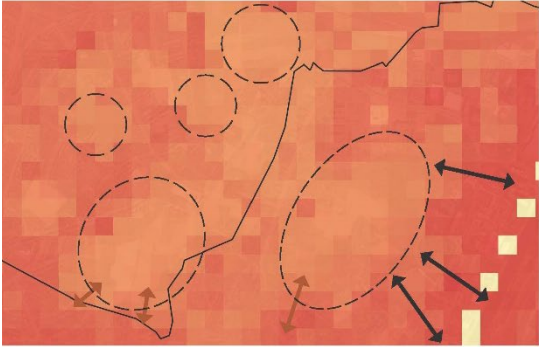


- Potentieel bodemrisicokaart to gebied
- verontreiniging
- zeer laag
 - laag
 - matig
 - hoog
 - zeer hoog
 - bezwaarde zone
 - niet van toepassing
 - Gevoeligheids

ANALYSE THÉMATIQUE

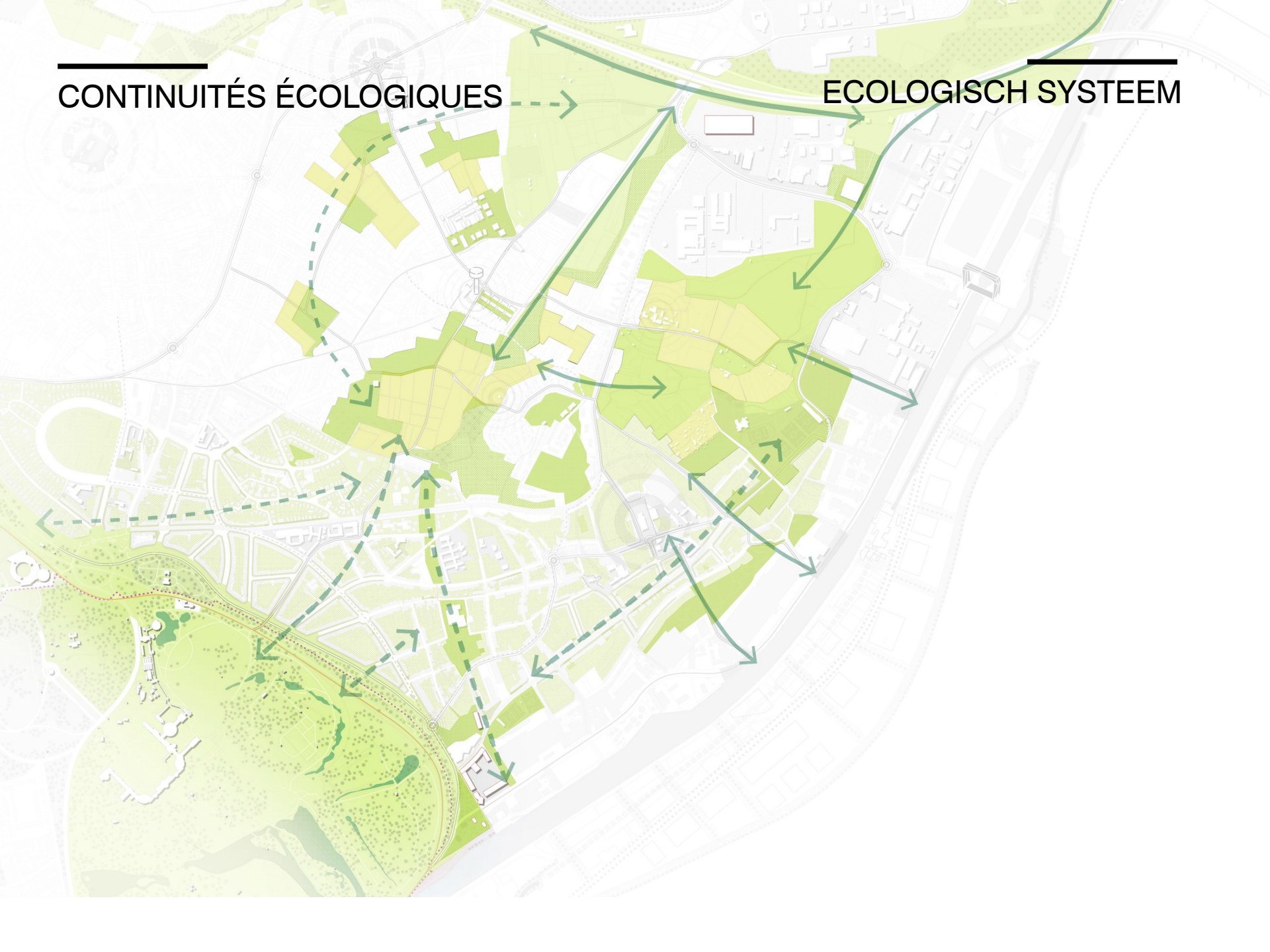


THEMATISCHE ANALYSE



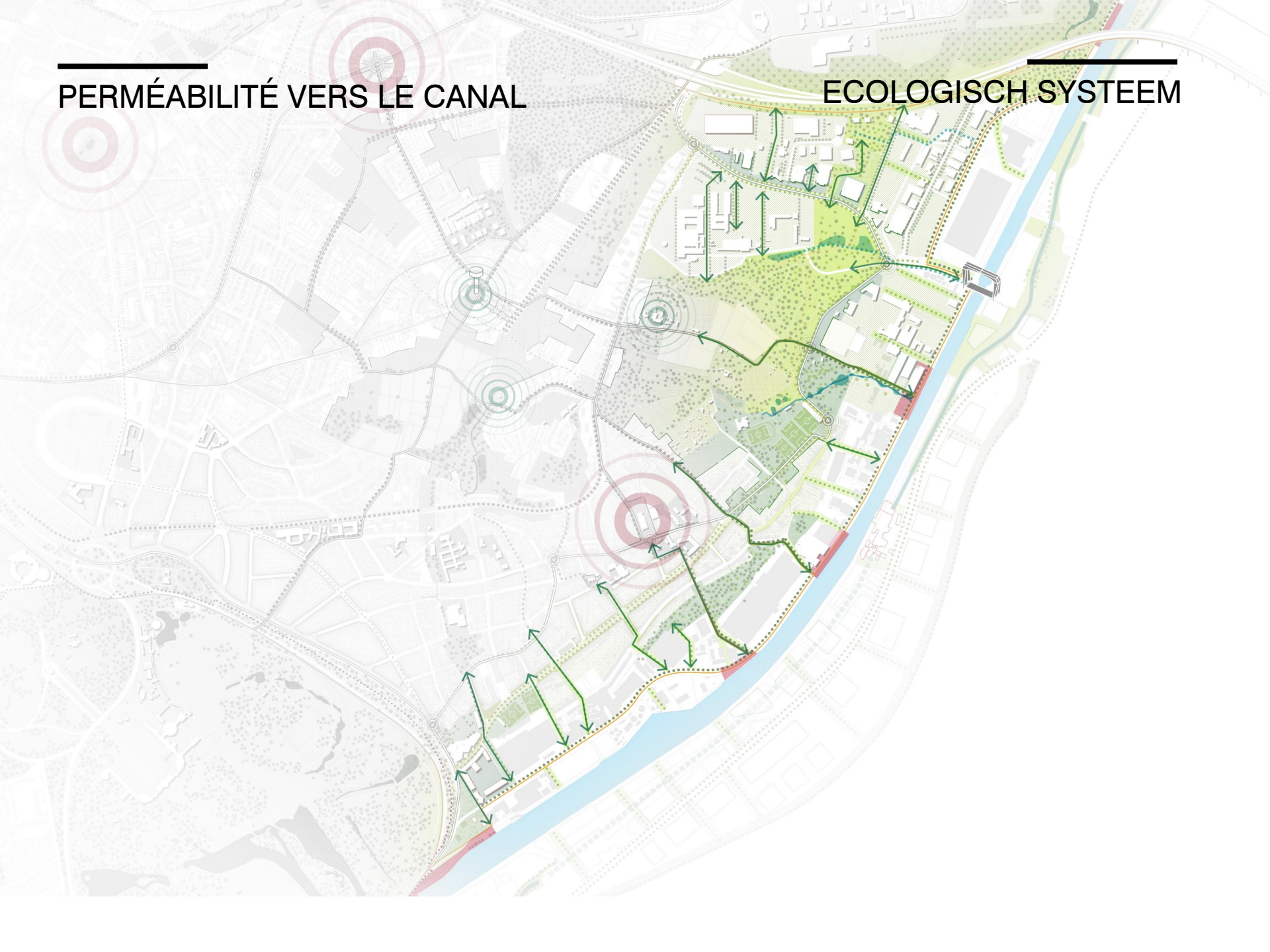
CONTINUITÉS ÉCOLOGIQUES

ECOLOGISCH SYSTEM



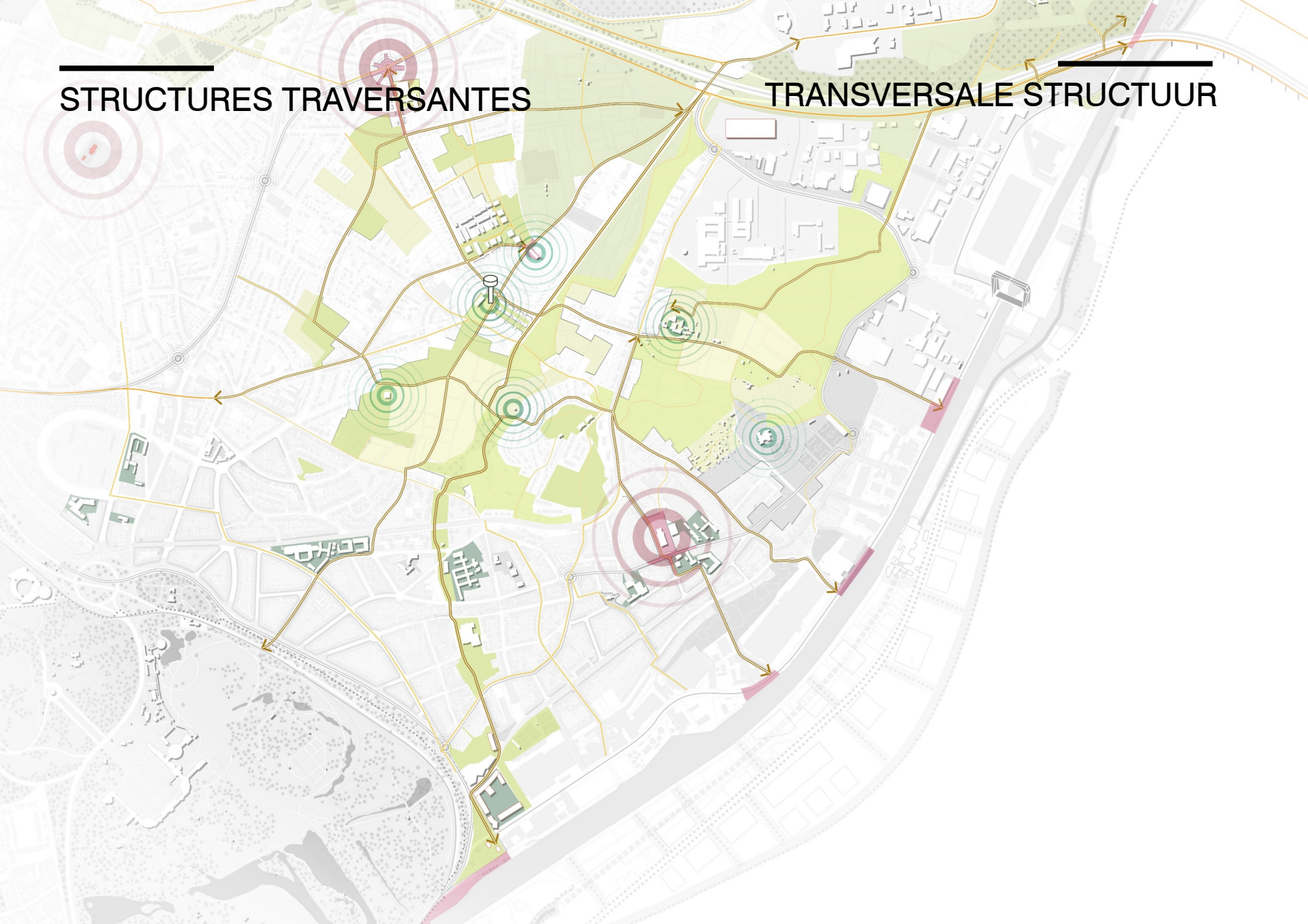
PERMÉABILITÉ VERS LE CANAL

ECOLOGISCH SYSTEEM



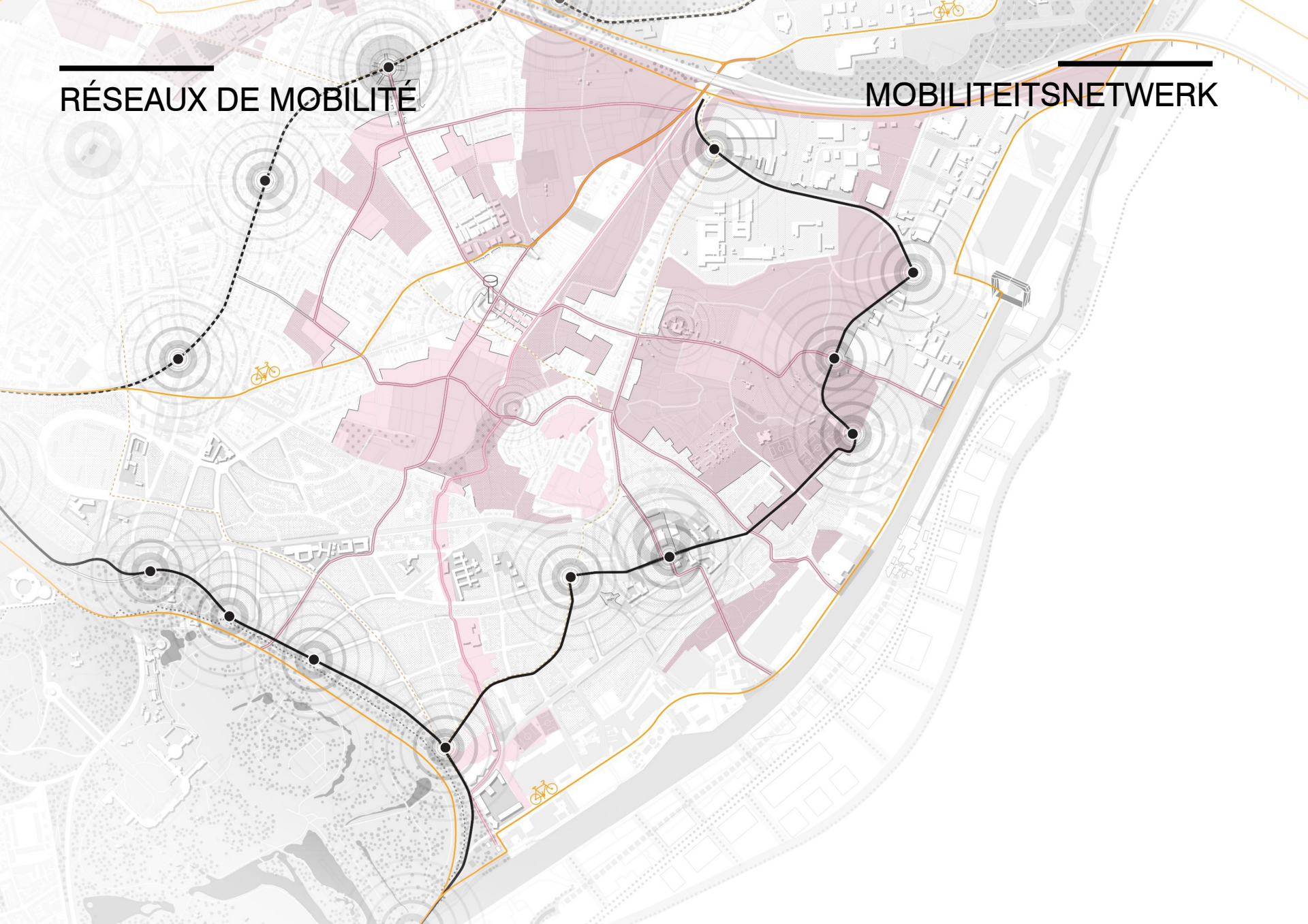
STRUCTURES TRAVERSANTES

TRANSVERSALE STRUCTUUR



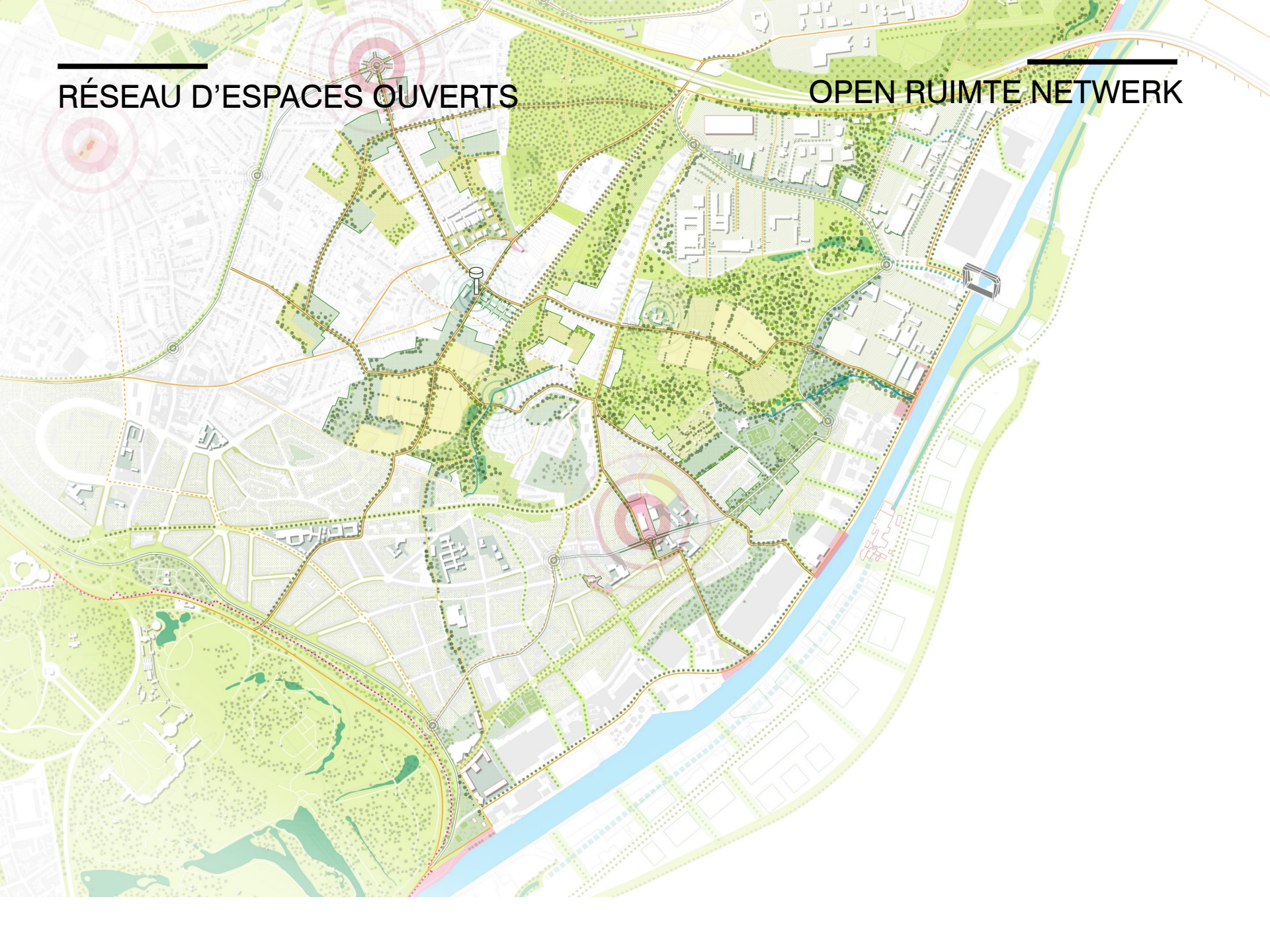
RÉSEAUX DE MOBILITÉ

MOBILITEITSNETWERK



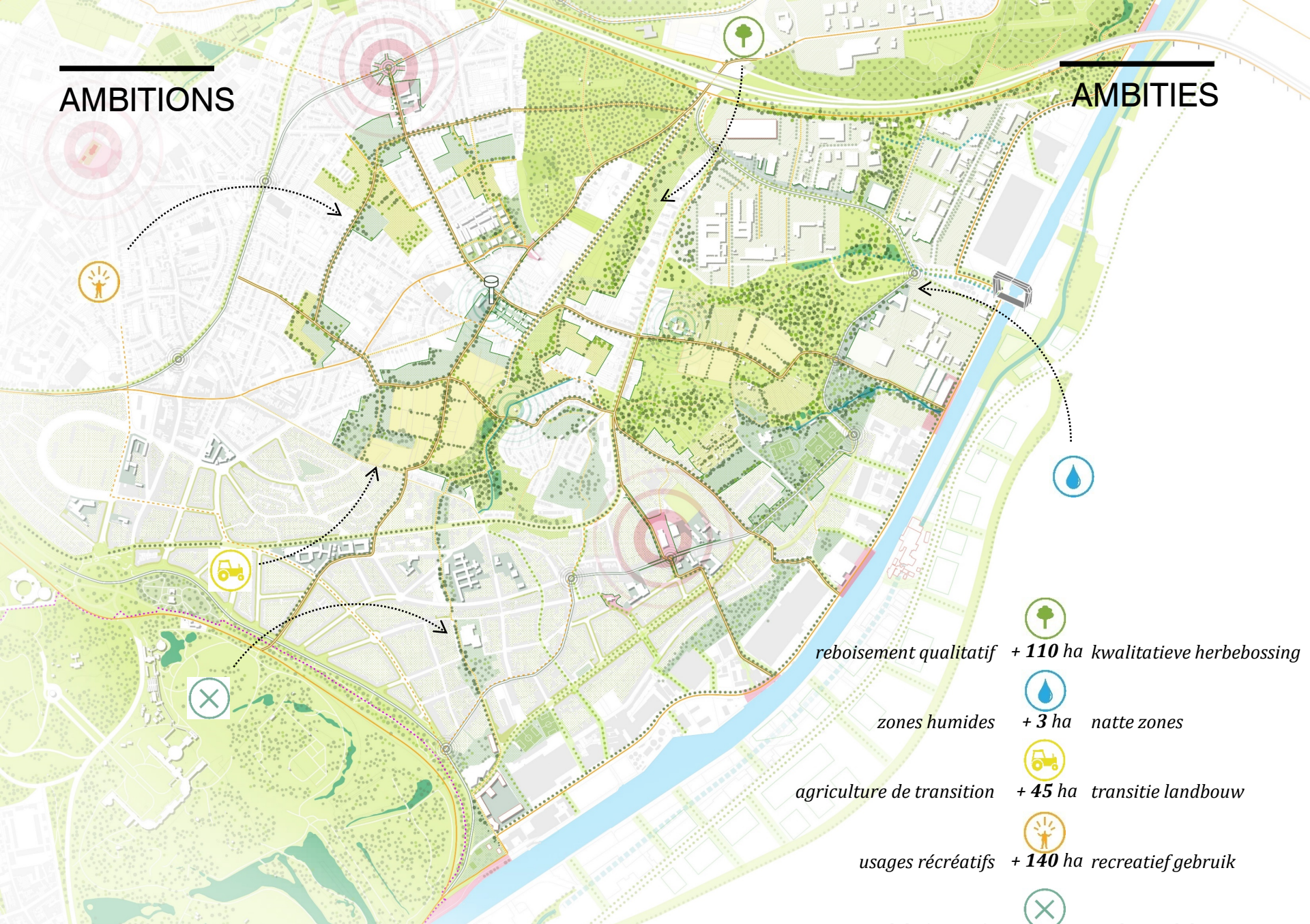
RÉSEAU D'ESPACES OUVERTS

OPEN RUIMTE NETWERK



AMBITIONS

AMBITIES



reboisement qualitatif + 110 ha kwalitatieve herbebossing

zones humides + 3 ha natte zones

agriculture de transition + 45 ha transitie landbouw

usages récréatifs + 140 ha recreatief gebruik

mobilité apaisée + 310 ha zachte mobiliteit

ZOOM 4. WOLUWEVELD

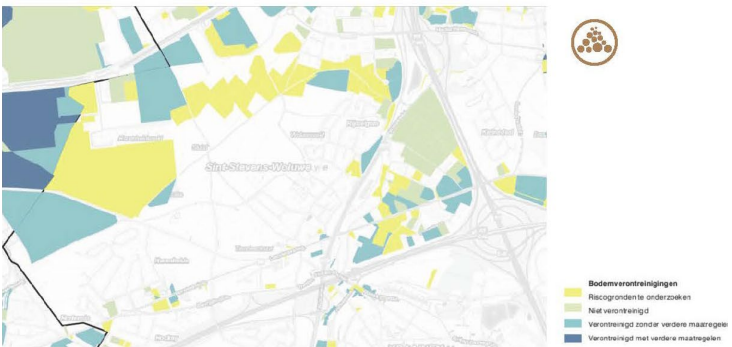
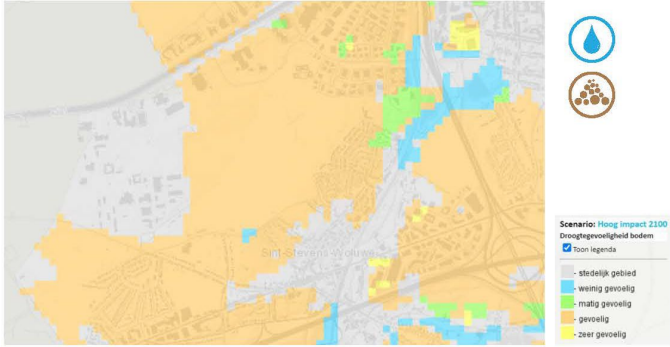
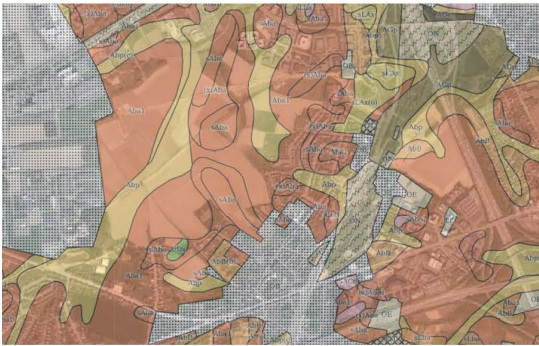
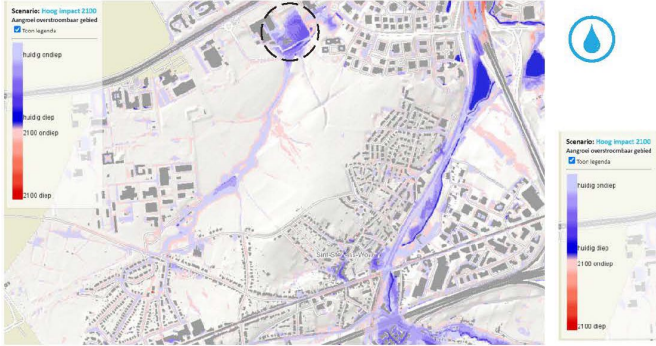
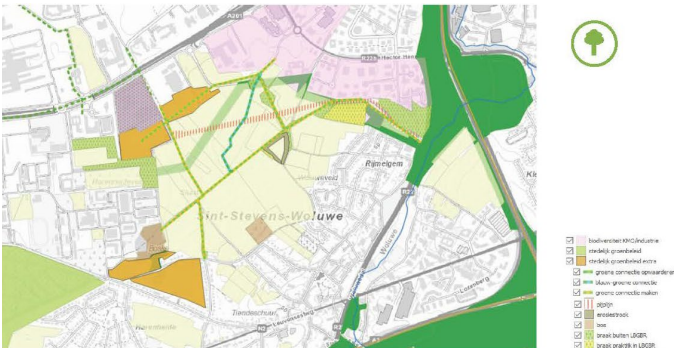
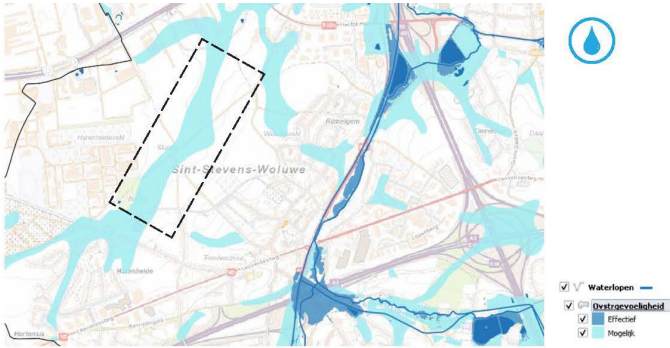


ZOOM 4. WOLUWEVELD

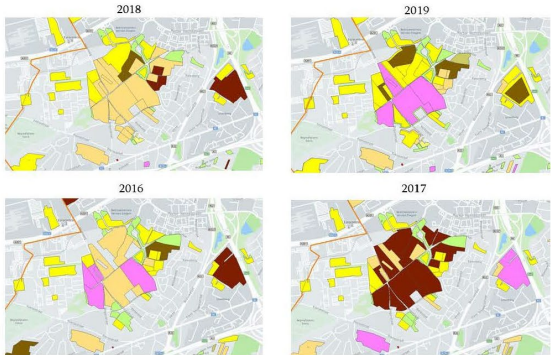


ANALYSE THÉMATIQUE

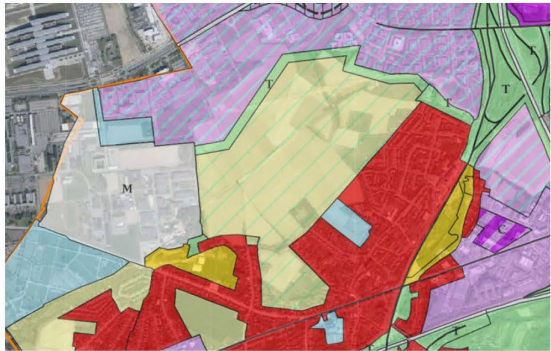
THEMATISCHE ANALYSE



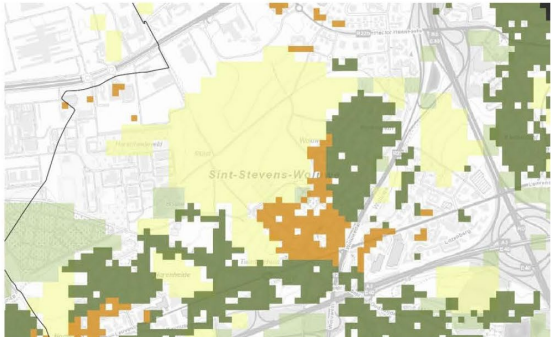
ANALYSE THÉMATIQUE



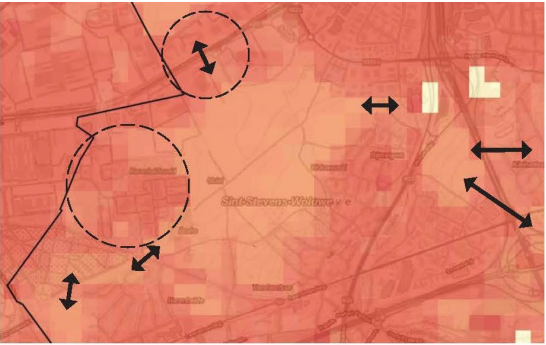
- Landbouwinfrastructuur
- Groenten, knollen en sieplanten
- Graalvland
- Vleedgewassen
- Aardappelen
- Suikerbieten
- Oranen, zaden en peulvruchten
- Mais
- Vlas en hennep
- Overige gewassen
- Fruit en hollen
- Houdbatige gewassen
- Water



- Vlaas naar bossetgroen**
- geen voorwaarde
- wonen met buurtgroen: natuur
- wonen met buurtgroen: landbouw
- wonen zonder buurtgroen
- Aanbod bossetgroen**
- 0
- open ruimte: natuur
- open ruimte: landbouw



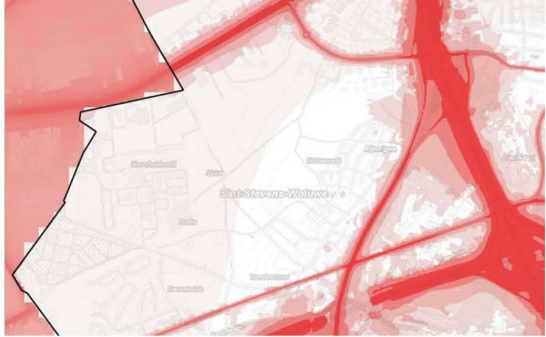
THEMATISCHE ANALYSE



- 0 dagen
- -15
- -30
- -45



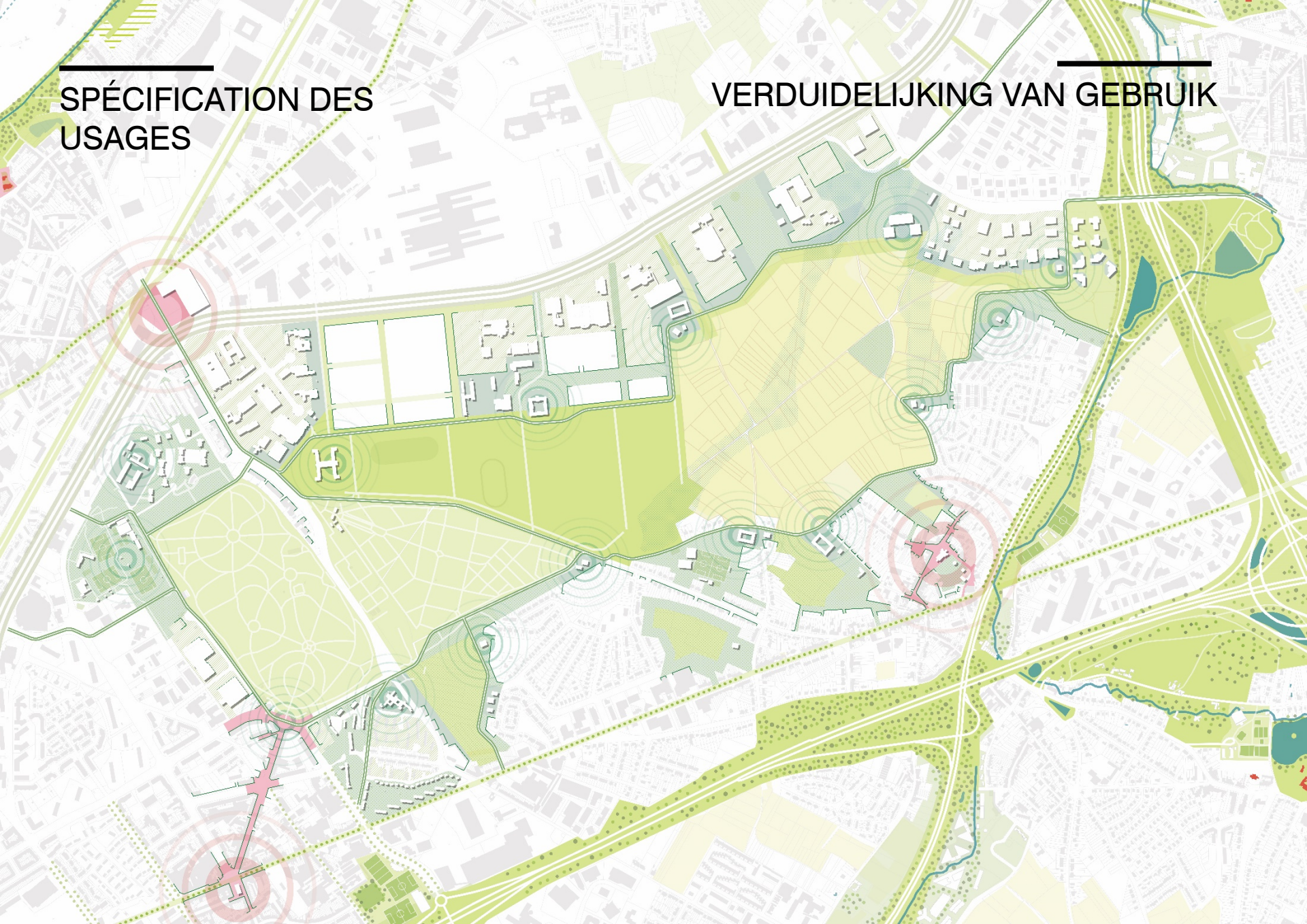
- Jaarlijkse gemiddelde BC content (2017)**
- 0 - 0,5
- 0,51 - 1,0
- 1,01 - 1,25
- 1,26 - 1,50
- 1,51 - 1,75
- 1,76 - 2,00
- 2,01 - 2,50
- 2,51 - 3,00
- 3,01 - 3,50
- 3,51 - Max



- Lden value**
- 55-60
- 60-65
- 65-70
- 70-75
- >=75

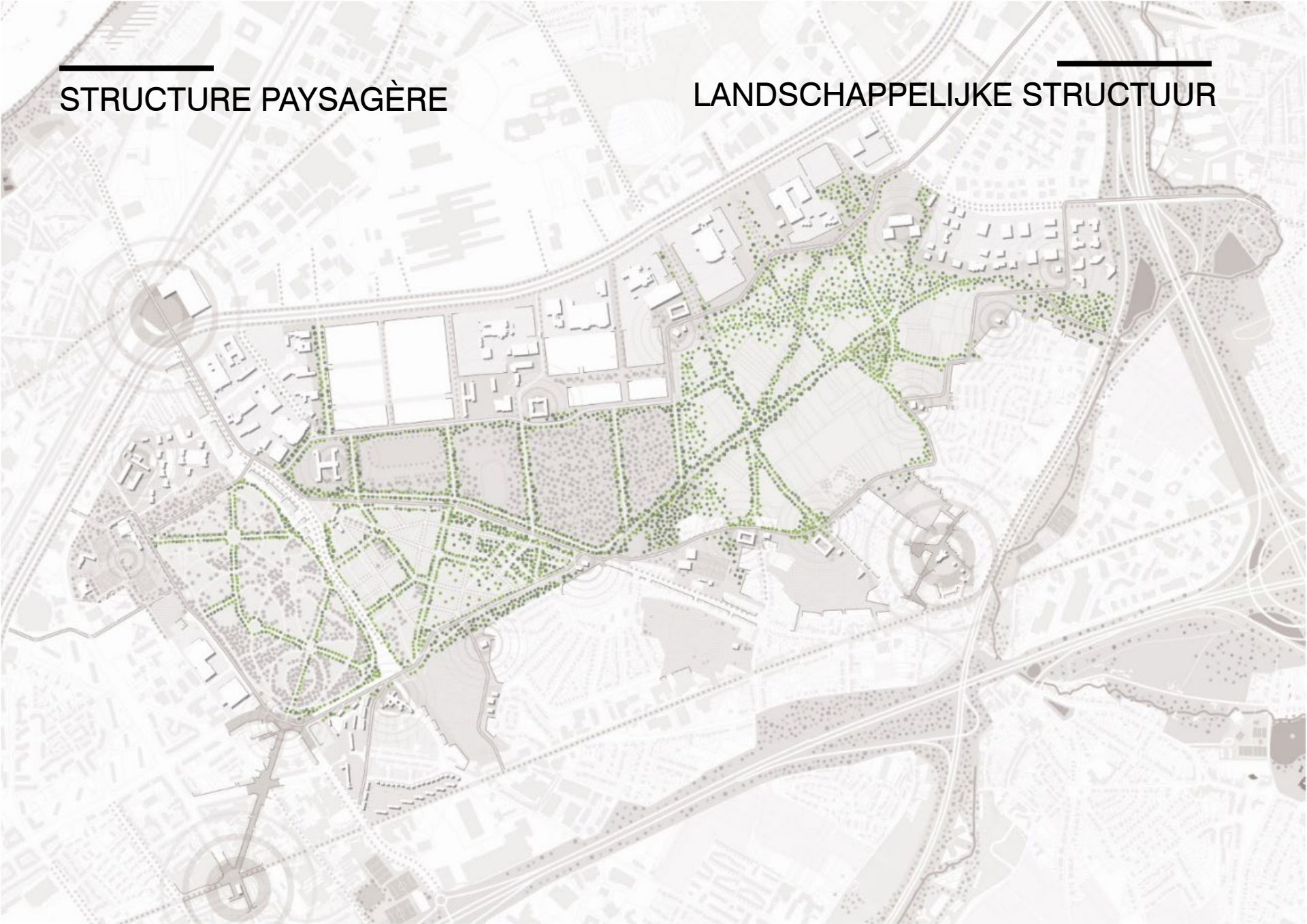
SPÉCIFICATION DES
USAGES

VERDUIDELIJING VAN GEBRUIK



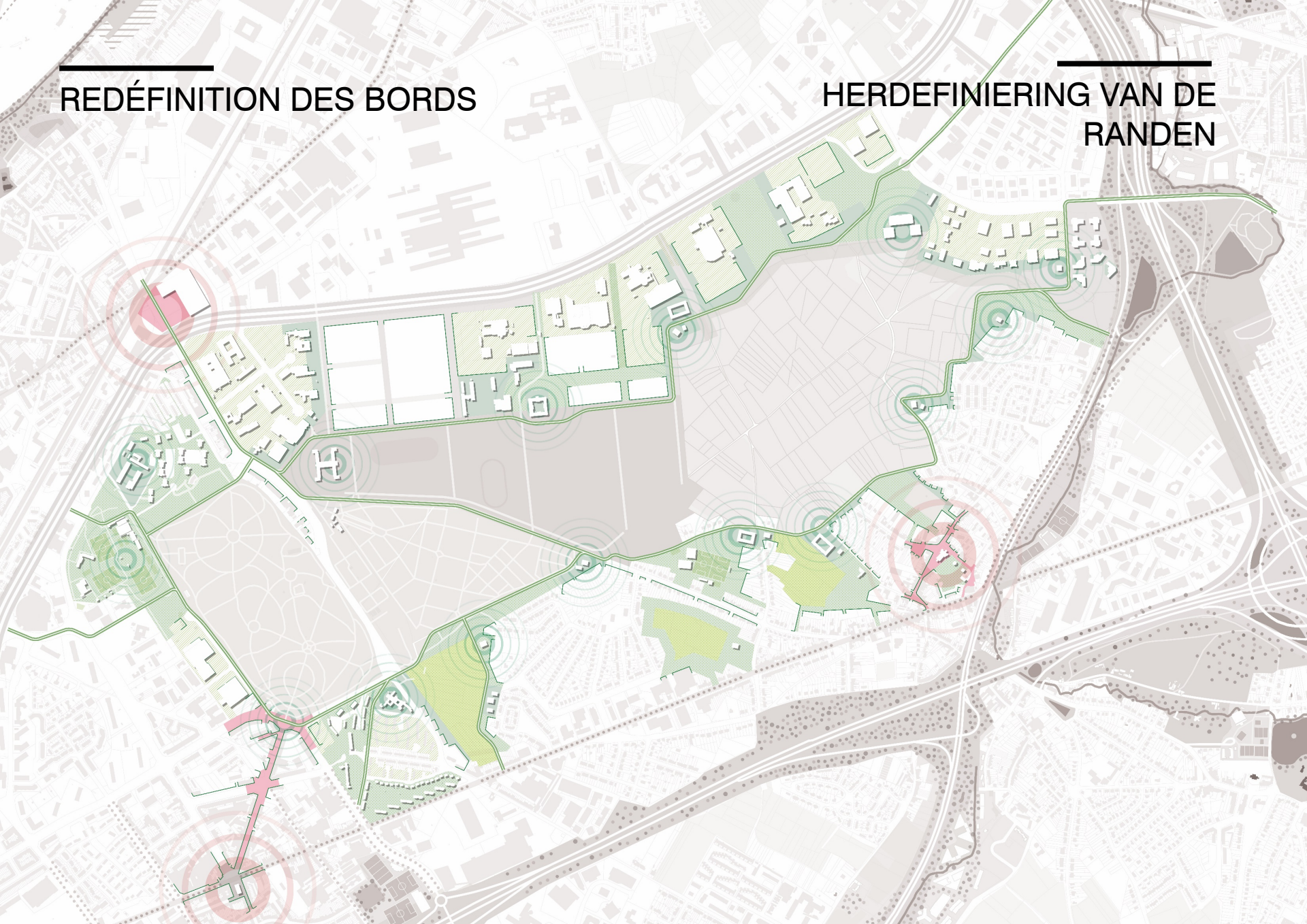
STRUCTURE PAYSAGÈRE

LANDSCHAPPELIJKE STRUCTUUR



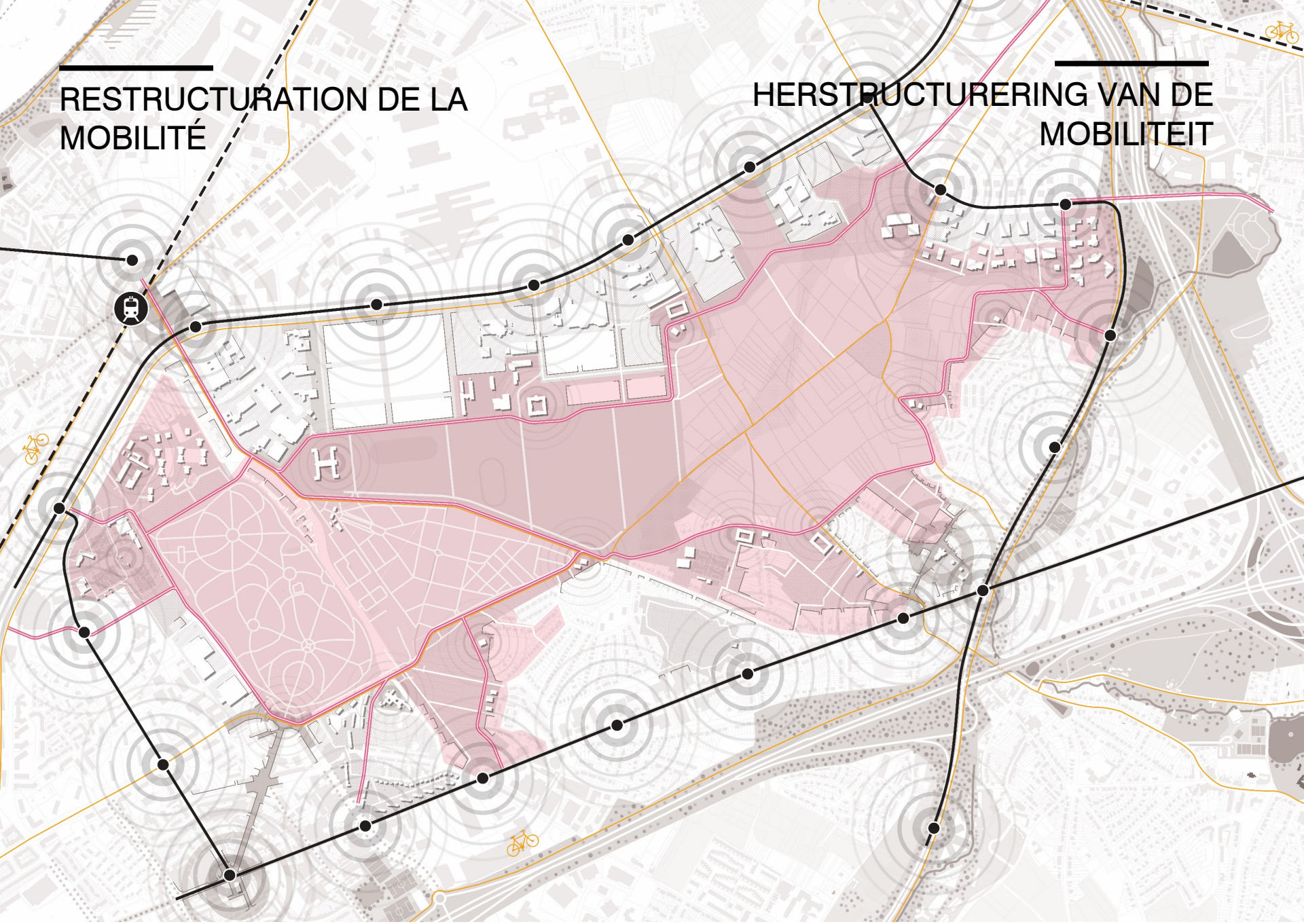
REDÉFINITION DES BORDS

HERDEFINIERING VAN DE RANDEN



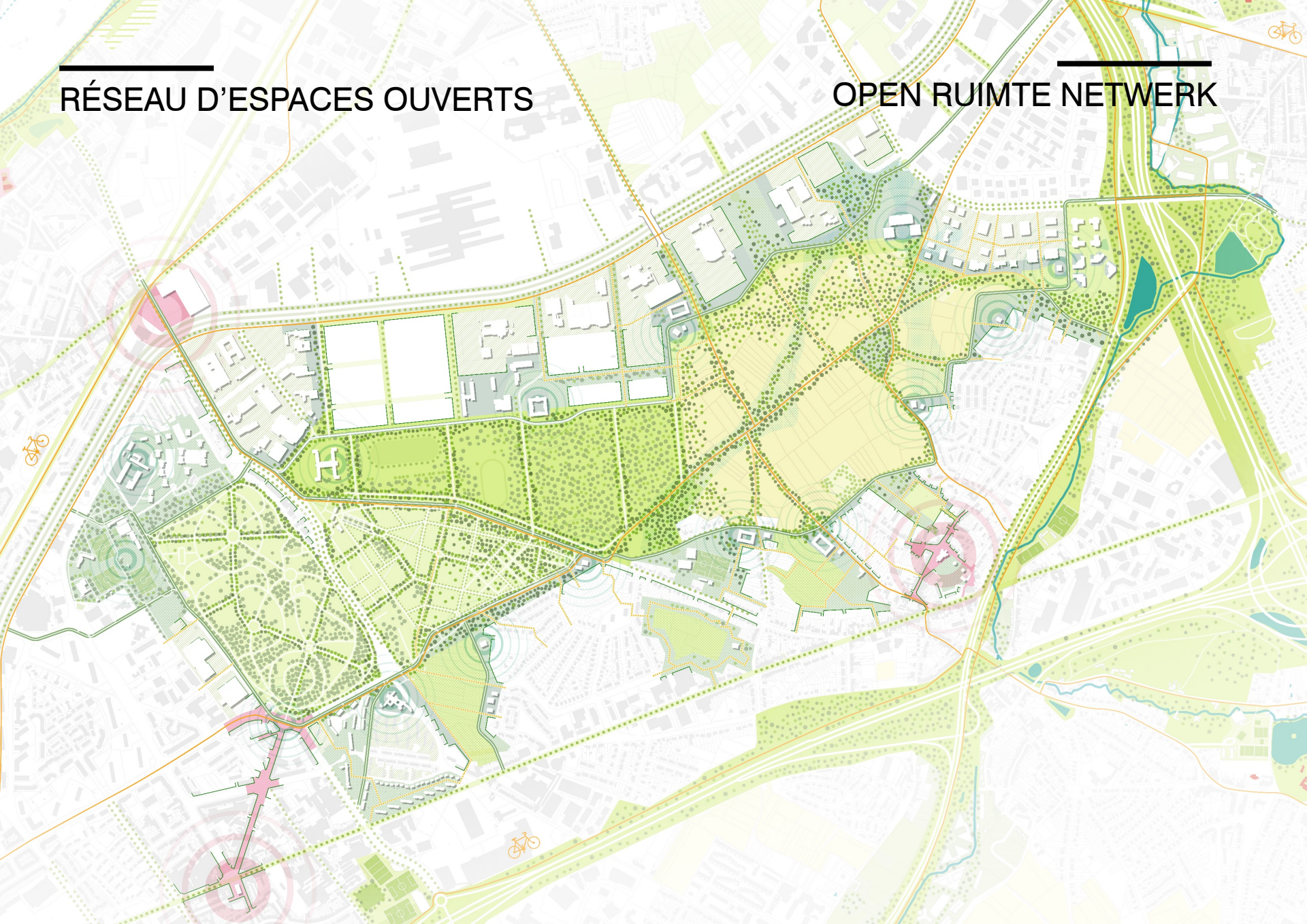
RESTRUCTURATION DE LA MOBILITÉ

HERSTRUCTURERING VAN DE MOBILITEIT



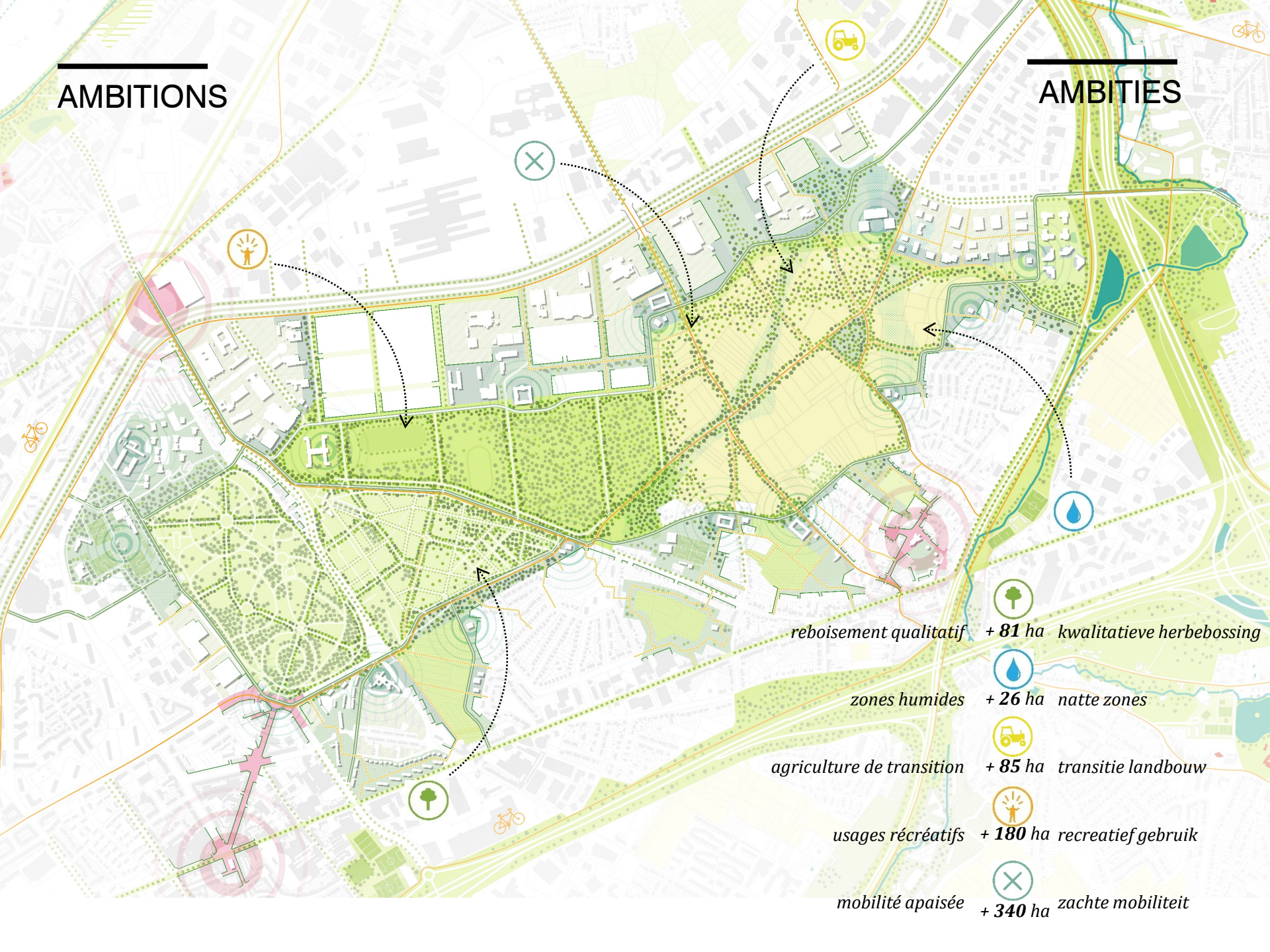
RÉSEAU D'ESPACES OUVERTS

OPEN RUIMTE NETWERK



AMBITIONS

AMBITIES



reboisement qualitatif + **81** ha kwalitatieve herbebossing

zones humides + **26** ha natte zones

agriculture de transition + **85** ha transitie landbouw

usages récréatifs + **180** ha recreatief gebruik

mobilité apaisée + **340** ha zachte mobiliteit

SUITE / 3 / VERVOLG